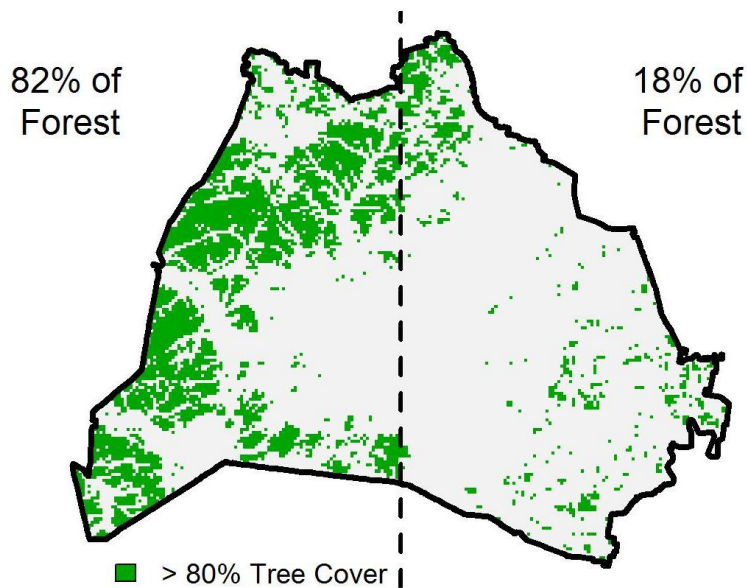
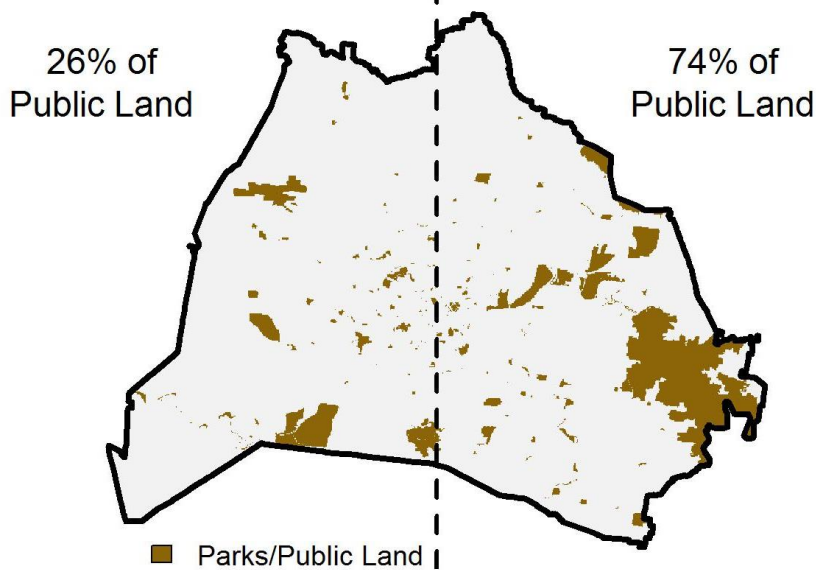


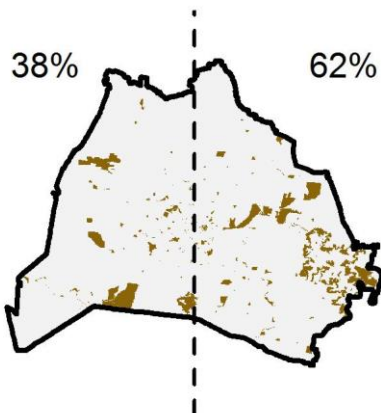
The western half of Davidson County contains 82% of Nashville's remaining closed-canopy forest, but only 26% of the public land.



Sensitive forest species often require large tracts of intact interior forest. To identify such areas, we used forest cover data from the National Land Cover Database 2011 Tree Canopy layer. Cells were aggregated to approximately 245 m square grids, and thresholded to binary data with a cutoff of 80% canopy cover.



Public Land areas include City, State, and Federal parks depicted here: <http://bit.ly/1E2YMcx>, plus Old Hickory Lake park areas and the Hermitage, clipped by the boundaries of Davidson County. The Hermitage consists of former state-owned land entrusted to a nonprofit to manage for the public good. See note on water areas below.



In summing total public land, we examined two methods: including surface area of lake water (above), and excluding water area (left). Both give qualitatively similar results. Lakes serve ecological and recreational roles and began as dry land flooded by the public, yet function differently than terrestrial ecosystems. Whether water should be included in the total depends upon the specific context.